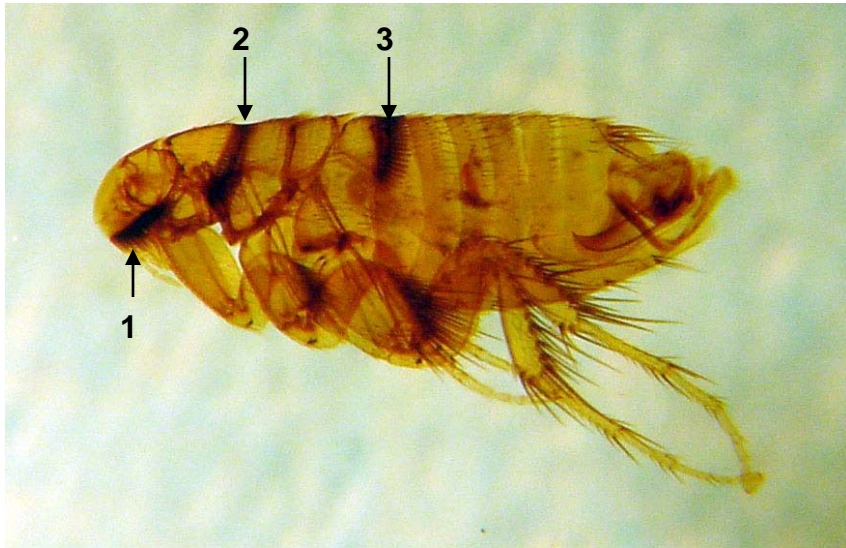
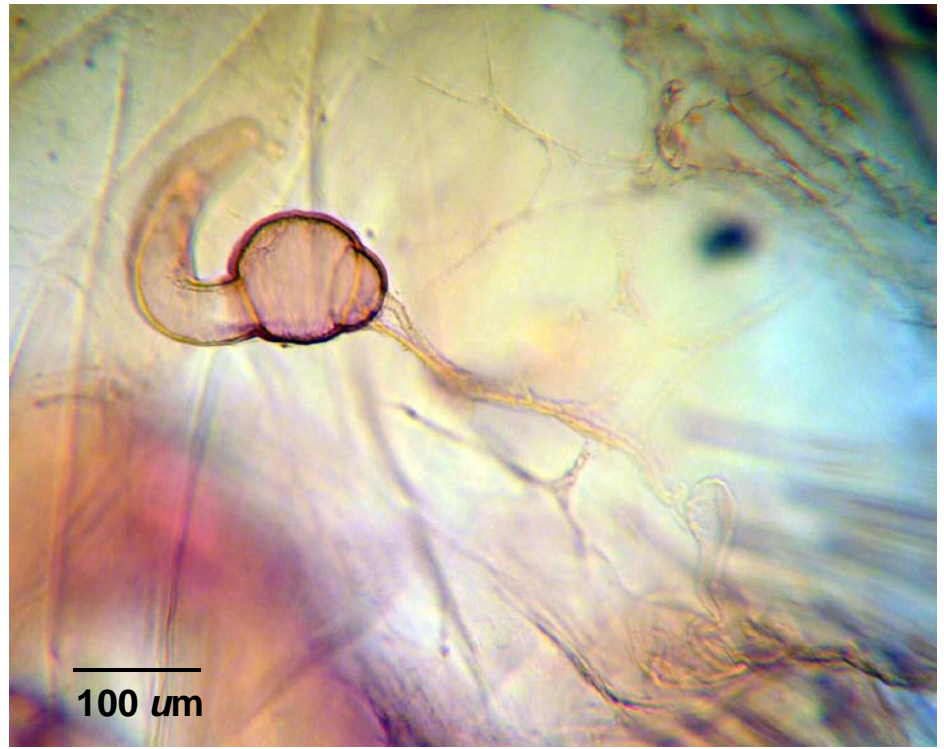
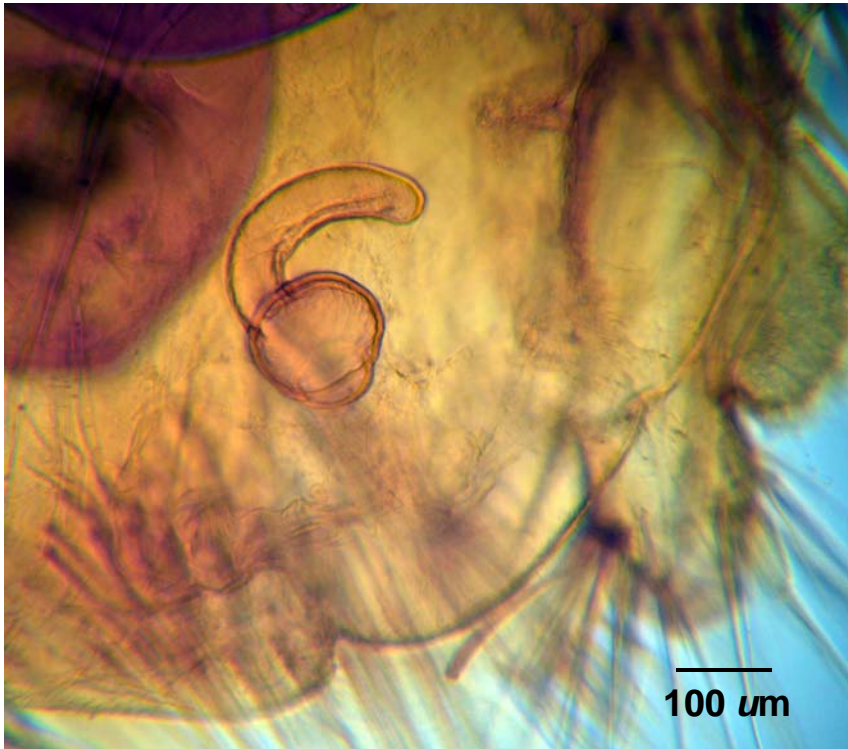


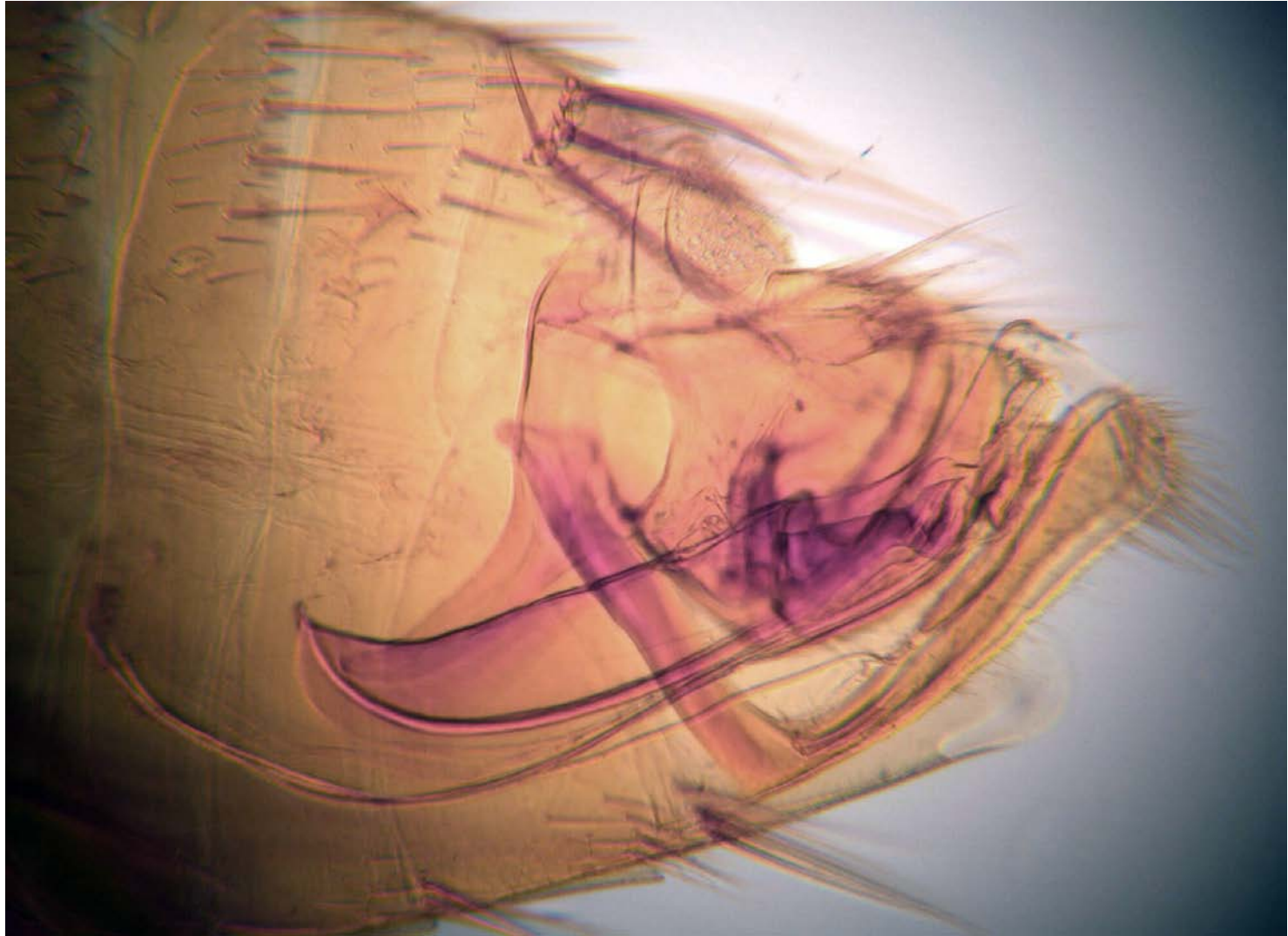
*Stenoponia americana*, characterized by 3 ctenidia – genal, pronotal and abdominal (1, 2 & 3, respectively). Note: These two individuals, a male to the left and female to the right, were photographed with the aid of a stereomicroscope at the same magnification. Relative sizes of these individuals were not altered in transfer to this PowerPoint slide.



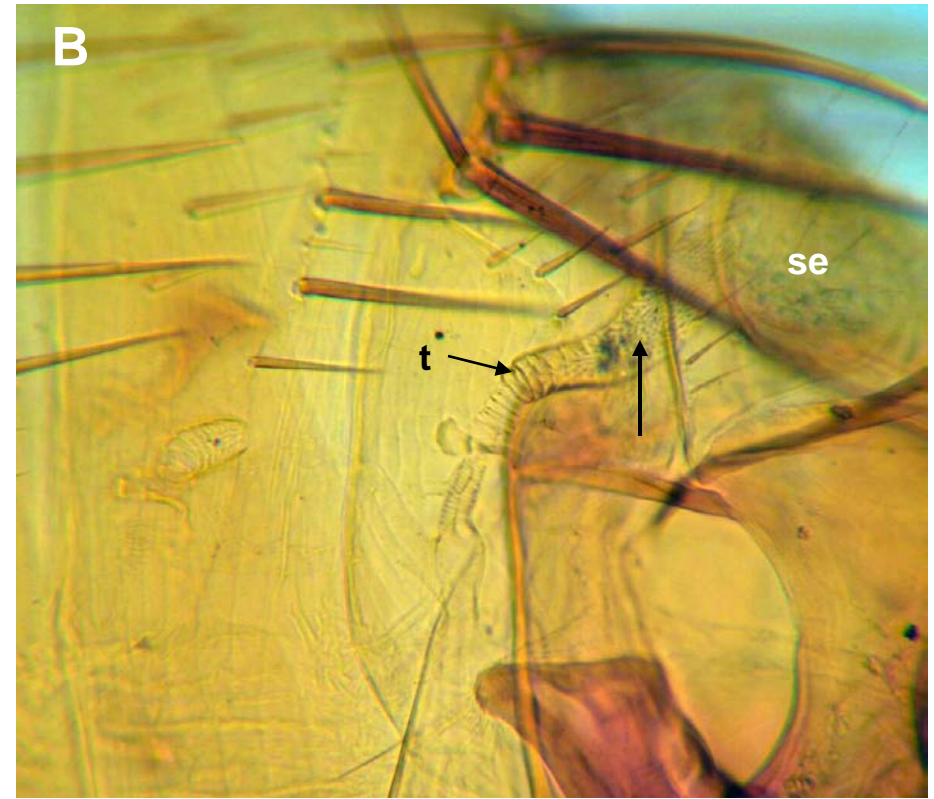
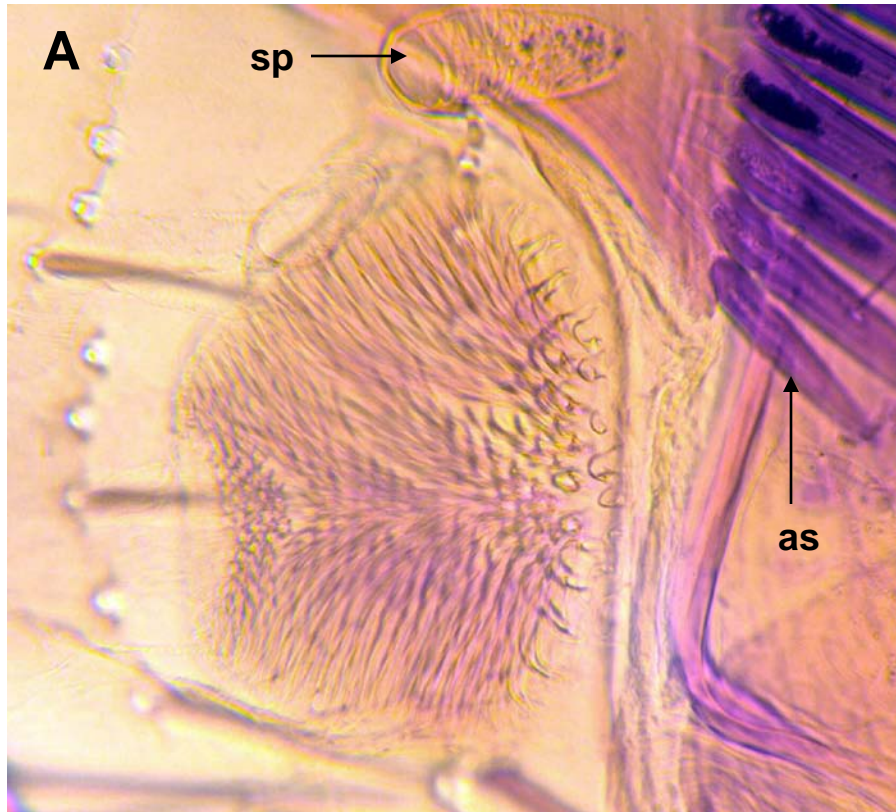
*Stenoponia americana*, spermathecae of 2 different females.



*Stenoponia americana*, male genitalia.



*Stenoponia americana*, proventriculus (in A) anterior (internally) to the abdominal ctenedium; and spiracular fossa (arrow in B). Legend: as, abdominal comb spine; se, sensillum; sp, spiracle; t, trachea.



*S. americana*, mouthparts: overview (A); serrated mandibles (B); epipharynx (C). Legend: e, epipharynx; g, genal comb; md, mandible; mp, maxillary palp.

